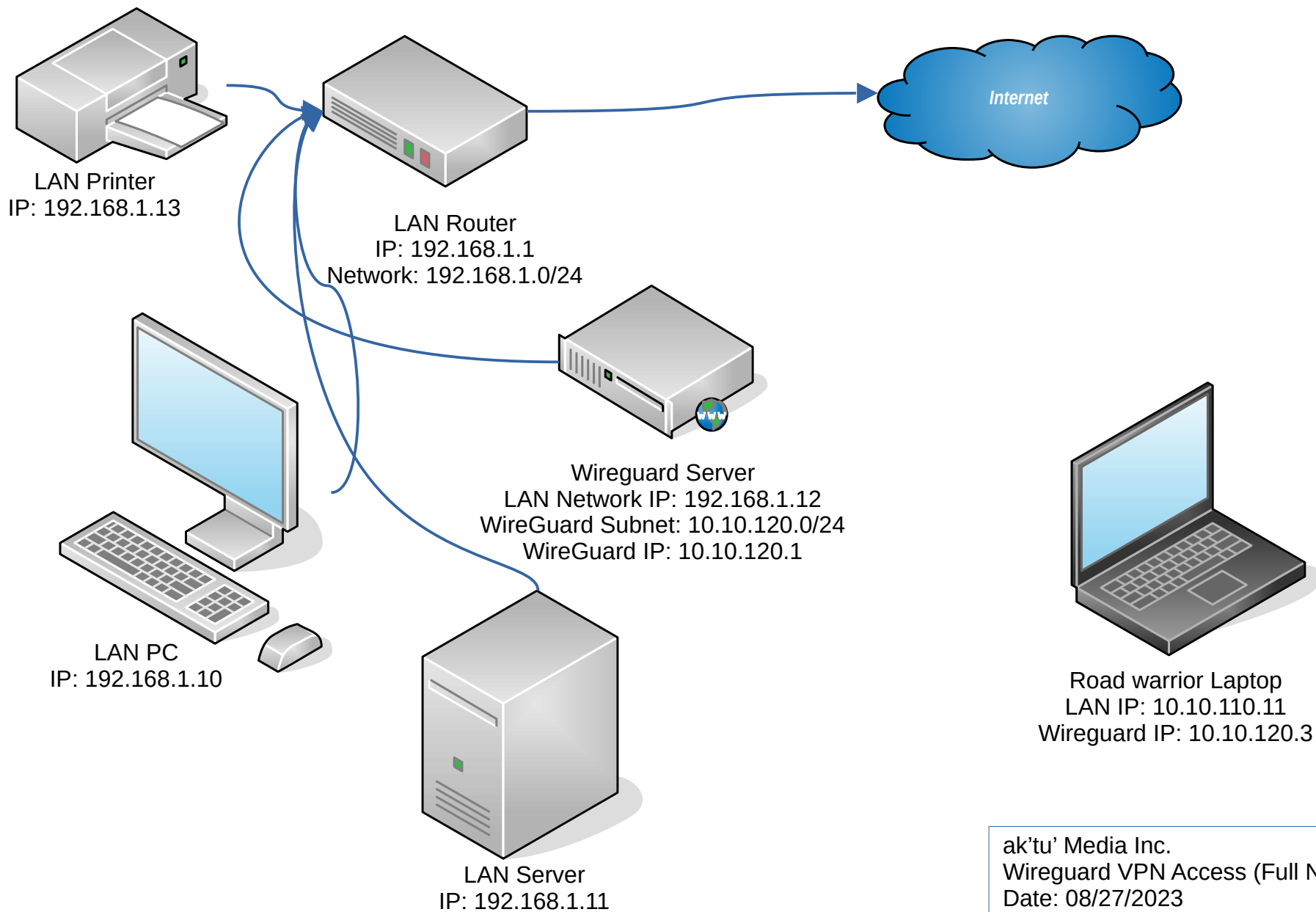
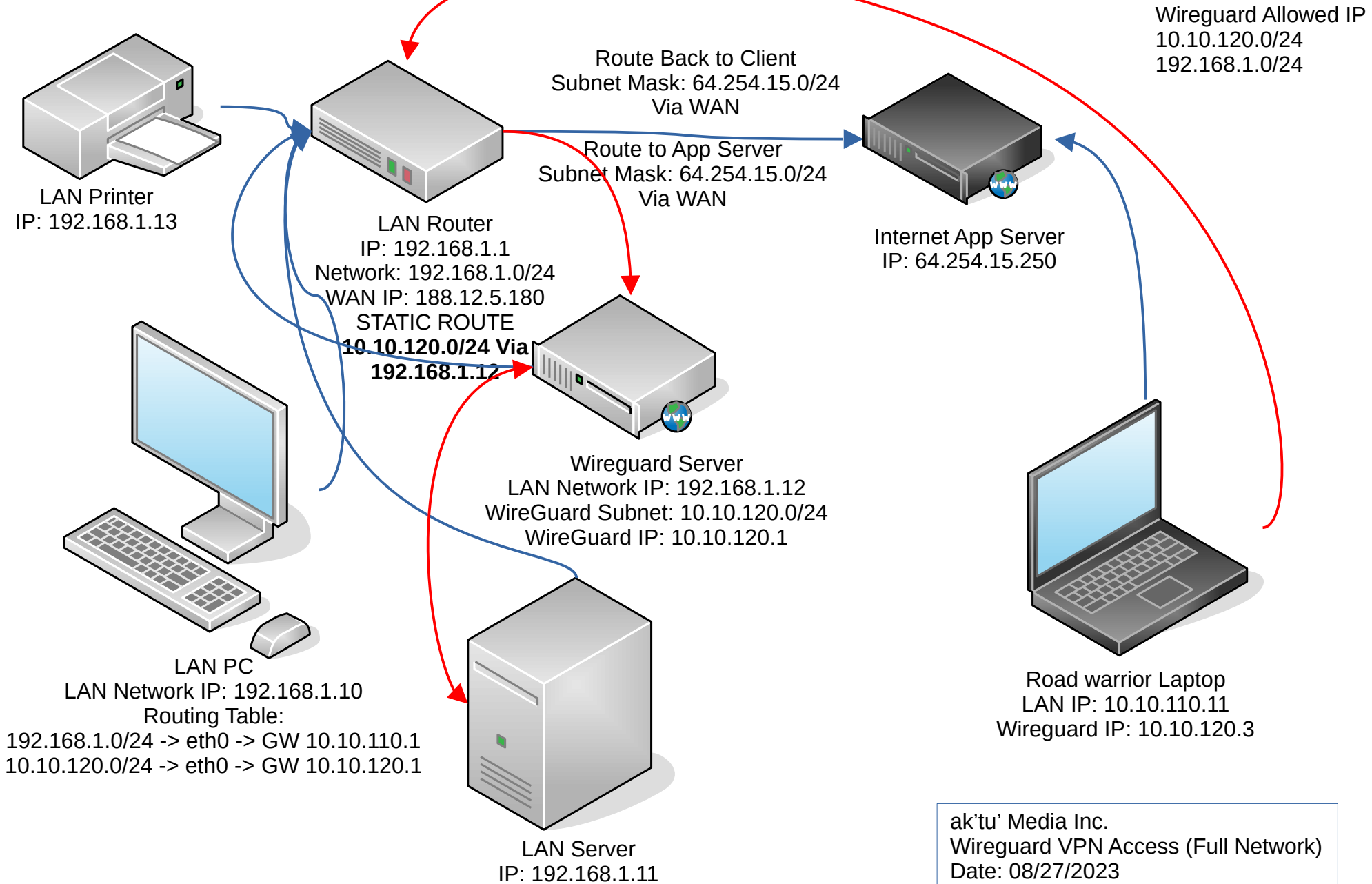


Traditional Network Setup



ak'tu' Media Inc.
Wireguard VPN Access (Full Network)
Date: 08/27/2023
V1.0

Network Routing Concept



Sample Route

Client Routing Table

```
IPv4 Route Table
-----
Active Routes:
Network Destination        Netmask          Gateway          Interface        Metric
0.0.0.0                    0.0.0.0          10.10.110.1      10.10.110.18     25
10.10.110.0                255.255.255.0    On-link          10.10.110.18     281
10.10.110.18              255.255.255.255  On-link          10.10.110.18     281
10.10.110.255             255.255.255.255  On-link          10.10.110.18     281
10.10.120.0                255.255.255.0    On-link          10.10.120.3      5
10.10.120.3                255.255.255.255  On-link          10.10.120.3      261
10.10.120.255             255.255.255.255  On-link          10.10.120.3      261
127.0.0.0                  255.0.0.0        On-link          127.0.0.1        331
127.0.0.1                  255.255.255.255  On-link          127.0.0.1        331
127.255.255.255           255.255.255.255  On-link          127.0.0.1        331
172.20.176.0               255.255.255.0    On-link          172.20.176.1     5256
172.20.176.1               255.255.255.255  On-link          172.20.176.1     5256
172.20.191.255            255.255.255.255  On-link          172.20.176.1     5256
192.168.1.0                255.255.255.0    On-link          10.10.120.3      5
192.168.1.255             255.255.255.255  On-link          10.10.120.3      261
```

Route to everything else

LAN Route

Route to Wireguard Network

LAN Allowed Network

```
Destination Gateway Genmask Flags Metric Ref Use Iface
0.0.0.0 0.0.0.0 255.255.255.0 U 0 0 0 wg0
default 0.0.0.0 0.0.0.0 U 0 0 0 pppoe3
10.10.110.0 0.0.0.0 255.255.255.0 U 0 0 0 eth2
10.10.111.0 0.0.0.0 255.255.255.0 U 0 0 0 eth2.2
10.10.112.0 0.0.0.0 255.255.255.0 U 0 0 0 eth2.4
10.10.113.0 0.0.0.0 255.255.255.0 U 0 0 0 wg0
10.11.2.225 0.0.0.0 255.255.255.255 UH 0 0 0 pppoe3
10.11.111.0 0.0.0.0 255.255.255.0 U 0 0 0 wg0
38.192.168.111.0 0.0.0.0 255.255.255.224 U 0 0 0 eth0
bras-192.168.111.0 0.0.0.0 255.255.255.255 UH 0 0 0 pppoe3
192.168.2.0 0.0.0.0 255.255.255.0 U 0 0 0 eth1
192.168.110.0 10.10.110.15 255.255.255.0 UG 0 0 0 eth2
192.168.111.0 10.10.110.15 255.255.255.0 UG 0 0 0 eth2
```

Route to Internet

ak'tu' Media Inc.
Wireguard VPN Access (Full Network)
Date: 08/27/2023
V1.0

Wireguard Server Config

```
[Interface]
Address = 10.10.120.1
ListenPort = 51823
PrivateKey = PRIVATE_KEY
# Packet Forwarding
PreUp = sysctl -w net.ipv4.ip_forward=1
[Peer]
# Road Warrior
PublicKey = PUBLIC_KEY
AllowedIPs = 10.10.120.3/32
```

WireGuard Client

```
[Interface]
PrivateKey = PRIVATE_KEY
Address = 10.10.120.3/24
DNS = 192.168.1.1
MTU = 1420

[Peer]
PublicKey = PUBLIC_KEY
AllowedIPs = 192.168.1.0/24, 10.10.120.0/24
Endpoint = server_IP:Port
PersistentKeepalive = 15
```

ak'tu' Media Inc.
Wireguard VPN Access (Full Network)
Date: 08/27/2023
V1.0